



DCCI BUSINESS DELEGATION TO GUANGZHOU, CHINA

April 15 – April 20, 2026



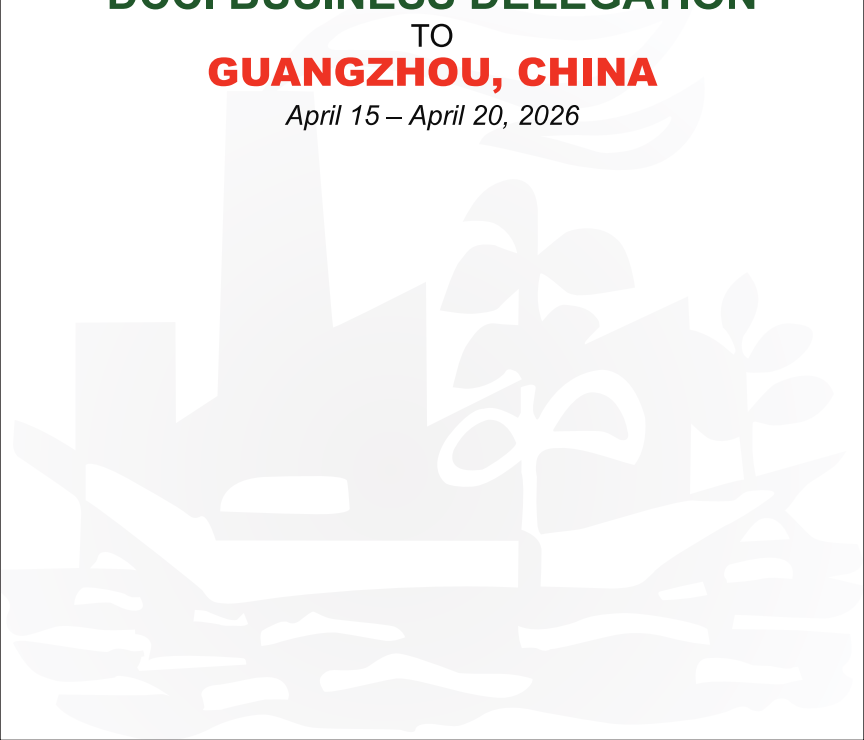
ঢাকা চেম্বার অফ কমার্স অ্যান্ড ইন্ডাস্ট্রি

www.dhakachamber.com



DCCI BUSINESS DELEGATION
TO
GUANGZHOU, CHINA

April 15 – April 20, 2026



Dhaka Chamber of Commerce & Industry

Dhaka Chamber of Commerce & Industry (DCCI), established in 1958 under the Companies Act 1913, is the country's largest and most dynamic chamber. For over six decades, it has been playing pioneering roles in promoting private sector development, representing over 38 categories of large and MSME entrepreneurs and contributing to economic growth and employment. DCCI is governed by an 18-member Board of Directors led by the President, along with a Senior Vice President and a Vice President.

Objectives and Functions of DCCI

- ★ Promote trade, investment, and industrialization through policy advocacy and business support
- ★ Provide inputs for government policies on trade, industry, finance, and fiscal measures
- ★ Represent the private sector in government committees and international forums
- ★ Facilitate dialogue among business leaders, government, and international stakeholders
- ★ Conduct research, surveys, and prepare Economic Policy Papers (EPPs)
- ★ Organize training, seminars, trade fairs, and business delegations abroad
- ★ Facilitate and develop entrepreneurship, particularly among women entrepreneurs
- ★ Build international partnerships through MoUs and MoCs with foreign chambers

Services

- ★ Business information, documentation, and issuance of Certificates of Origin (CO)
- ★ Assistance with company registration (RJSC, CCI&E) and trade-related procedures
- ★ Organizing B2B meetings, trade delegations, trade fairs, and networking events
- ★ Training programs, workshops, webinars, seminars, policy dialogue and international conferences
- ★ Publications, research journal, circulars, and updates on policies, regulations, and business opportunities

BANGLADESH COUNTRY PROFILE

Official Name	: The People's Republic of Bangladesh
Form of Government	: Parliamentary System
Head of the State	: President
Head of the Government	: Prime Minister

Geographical Location

Between 20° 34' to 26° 38' North Latitude
and 88°01' to 92°41' East Longitude

Boundary

North: India (West Bengal & Meghalaya), West: India (West Bengal), East: India, (Tripura & Assam) and Myanmar, South: Bay of Bengal

Land Area

147,570 sq. km (56,977 sq miles)

Maritime Area:

118,813 sq. km (Territorial Sea-12 nautical miles, Exclusive Economic Zones- 200 nautical miles)

Population

170 millions (large consumer base)
MAC Population Growth: 10.5% annually
Youth Demographic: Over 45% under age 25

Digital Landscape

Internet Penetration: 90.1 million
Digital Transactions: 24 million transactions per day
Mobile Phone Penetration: 98.9% of total households

Internet domain
.bd

Literacy Rate

77.9% (7+ years, BBS)
75.6% (15+ years, BBS)

Dialing Code

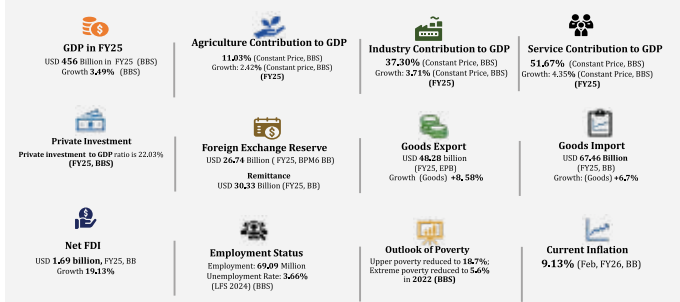
+880



BANGLADESH ECONOMY: A BRIEF OVERVIEW

Bangladesh is an emerging economy which is in the process of graduation into a developing economy. Conventionally, Bangladesh is an export-oriented economy backed by immense local industrialization. Despite ongoing geopolitical tension, Bangladesh has steadily maintained its economic operation to the large extent containing all visible challenges. Nevertheless, Bangladesh's economic outlook remains optimistic, with steady growth expected in the near future. According to the World Bank Group, Bangladesh has demonstrated a strong track record of growth and development, even amid heightened global uncertainty. Over the past decade, the country has maintained an average annual growth rate exceeding 6%, driven by a favourable demographic dividend, resilient export performance, steady remittance inflows, and sound macroeconomic management.

CURRENT SNAPSHOT OF BANGLADESH ECONOMY



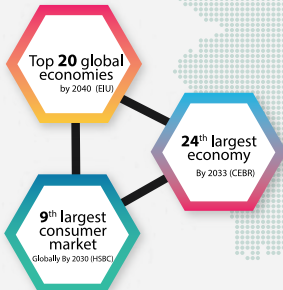
Projections and Trends Shaping Bangladesh's Economic Future



Classified as a "Next Eleven" emerging market by Goldman Sachs



Recognized as one of the "Frontier Five" economies by JP Morgan



2nd Largest RMG Exporter – Next to China



Top Producer & Exporter of Raw Jute and Jute Goods



Global leader in sustainable apparel manufacturing with 280 LEED-certified factories.



3rd Largest Rice Producer – After China and India

BILATERAL TRADE & INVESTMENT OVERVIEW

Bangladesh-China Bilateral Trade

FY (July-June)	Export	Import	Trade Balance	Total Trade <i>(Figure in Million USD)</i>
2020-2021	680.66	12925.20	(-) 12244.54	13605.86
2021-2022	683.43	19349.45	(-) 18666.02	20032.88
2022-2023	677.36	17826.61	(-) 17149.25	18503.97
2023-2024	715.38	16637.07	(-) 15921.69	17352.45
2024-2025	694.49	18,195.82	(-) 17501.33	18,890.31

Key Export and Import Items between Bangladesh and China

Sl. No	Major Export Items from Bangladesh to China	USD Mn	Major Import Items from China to Bangladesh	USD Mn
1.	62: Articles of apparel and clothing accessories, not knitted or crocheted	153.85	110000 Textiles & Textile Articles	7,855.21
2.	53: Other vegetable textile fibres; paper yarn and woven fabrics of paper yarn	102.75	160000 Machinery & mechanical appliances and electrical equipment	3,780.00
3.	03: Fish and crustaceans, mollusc and other aquatic invertebrates	85.87	060000 Chemical Products	1,699.63
4.	61: Articles of apparel and clothing accessories, knitted or crocheted	70.89	150000 Base Metals & Articles of Base Metal	1,289.65
5.	41: Raw hides and skins (other than furskins) and leather	55.83	070000 Plastics & Rubber Articles	1,015.14
6.	52: Cotton	54.55	050000 Mineral Products	479.80
7.	38: Miscellaneous chemical products	20.28	020000 Vegetable Products	354.82
8.	74: Copper and articles	17.90	100000 Wood Pulp, Paper or paperboard	347.39
9.	64: Footwear, gaiters	17.51	200000 Miscellaneous Manufactured Articles	347.30
10.	12: Oil seeds and oleaginous fruits; miscellaneous grains, seeds and fruit; industrial or medicinal plants; straw and fodder	12.88	170000 Vehicules, Aircraft, Vessels and Associated Transport Equipment	263.24

FDI from China to Bangladesh: Inflows and Cumulative Stock

FY (July-June)	FDI Inflows (USD Mn)	FDI Stock (From 2000 to end June 2025)
2020-21	116.09	USD 1712.54 million 5 th Largest Source
2021-22	428.09	
2022-23	68.15	
2023-24	283.56	
2024-25	274.17	

Sectoral Breakdown of Inward FDI Stock

Key Sectors	USD Mn	Key Sectors	USD Mn
Power	968.15	Pharmaceuticals & Chemicals	8.2
Textile and Wearing	270.38	Food Products	5.6
Trading	78.75	Agriculture & Fishing	1.03
Construction	46.94	Computer Software & IT	0.06
Leather & Leather Products	29.75	Other Sectors	303.68

Note:

EPB = Export Promotion Bureau

BB = Bangladesh Bank

ITC = International Trade Centre

LEADER OF THE DELEGATION



RAZEEV H CHOWDHURY

Senior Vice President, DCCI

Managing Director

Defense Dynamics Enterprise

Associated/Subsidiary Companies

Arco Cold Storage Ltd.

Microsec International Ltd

(A British-Bangladesh JV IT Company)

Watches World Ltd.

Corporate Address

68/1, Gulshan Avenue
Gulshan-1, Dhaka-1212, Bangladesh.

Mobile: +88-01724802209

E-mail: svp@dhakachamber.com, razeevc@ddebd.com

Website: www.ddebd.com

Line of Business:

*Agri Cold Chain, Retail, Defense and Oil Industry Equipment
Indenting, Potato, Watches*

Area of Collaboration:

Export: *Potato and Agro Products*

Import: *Machinery, Equipment and Spare Parts*

JV & Investment: *Cold Chain, Food Processing & Software Development*

MEMBER OF THE DELEGATION



MINHAJ AHMED

Director, DCCI

Managing Director
Ahmed Food Products (PVT.) Ltd.

Corporate Address

Ahmed Food Bhaban M/4/4
Road 7, Section 7, Mirpur
Dhaka-1216, Bangladesh.

Office Telephone: +88-01987877877

Mobile: +88-01937444222

E-mail: ahmedfd@dhaka.net

Website: www.ahmedfood.com.bd

Line of Business:

Sauce, Jelly, Jam, Pickles, Spices, Bakery, Snacks

Area of Collaboration:

Export: *Sauce, Jelly, Jam, Pickles, Spices, Bakery, Snacks*

Import: *Food Additives, Food Chemical, Tomato Paste, Seasonings, Oleoresin, Spices*

JV & Investment: *Sauce, Noodles, Tomato Paste, Beverage, Snacks*

MEMBER OF THE DELEGATION



NAYEEMUR RAHMAN

Director, DCCI

Director

Uttara Motors Ltd.

(An Enterprise of Uttara Group of Companies)

Corporate Address

Uttara Centre
102 Shahid Tajuddin Ahmed Sarani
Tejgaon Industrial Area
Dhaka-1208, Bangladesh.

Tel: +88-02-41025166, 02-41025162

Mobile: +88-01730011700

E-mail: nmr@ugc-bd.net

Website: www.uttaramotorsltd.com

Line of Business:

*Automobile (Manufacturing, Assembling, Marketing)
Knitwear (Manufacturer & Exporter)*

Area of Collaboration:

Import: *Electric Vehicle, Light Engineering, Motors Parts,
Textile & RMG*

JV & Investment: *Automobile Parts and Component Manufacturing*

MEMBER OF THE DELEGATION



RASHEED MYMUNUL ISLAM

Director, DCCI

Managing Director

Monno Ceramic Industries Limited

Associated/Subsidiary Companies:

Monno Agro & General Machinery Ltd.

Monno Fabrics Ltd.

MARS Retail Ltd.

Monno Bone China Ltd.

Monno Medical College and Hospital

Monno Nursing Institute

Corporate Address

9 Wyer Street, Wari, Dhaka-1203, Bangladesh.

Telephone: +88-09642601083

Mobile: +88-01711425244

E-mail: rasheed.islam@monno.com

Website: www.monno.com

Line of Business:

Ceramic Tableware, Textiles, Light Engineering, Agri Machinery, Trading

Area of Collaboration:

Export: *Ceramic Tableware*

Import: *Ceramic Raw Materials, Design Services*

JV & Investment: *Ceramic Tableware*

MEMBER OF THE DELEGATION



SAIF UDDOWLAH

Director, DCCI

Managing Director

Petrochem (Bangladesh) Limited

Associated/Subsidiary Companies:

Petrochem Agro Industries Limited

Solar Power Limited

International Services (Bangladesh) Limited

Bangla Solar IT, Growvita Agro Limited

Habitat Builders Limited

Corporate Address

ABC Heritage (3rd Floor), Plot#2&4

Jashim Uddin Avenue, Sector#3

Uttara, Dhaka-1230, Bangladesh

Tel: +88-02-48961701-3

Mobile: +88-01713244941

E-mail: saifuddowlah@petrochembd.com

Website: www.petrochembd.com

Line of Business:

Agro Inputs, Renewable Energy, Machineries, Seeds

Fertilizer, Pesticides, LED Bulb

Area of Collaboration:

Export: Vegetables, Fruits, Spices, Machineries

Import: Agro Products, Solar Products, LED Lights, Agri Machineries

JV: Agro Processing Factory Set up, Machineries, Renewable Energy

MEMBER OF THE DELEGATION



ABDULLAH AL EHSAN

Head of Business
IFAD Autos PLC

Associated/Subsidiary Companies:

IFAD Group
IFAD Multi Products Limited

Corporate Address

IFAD Tower, Plot No 7 (New)
Tejgaon I/A, Dhaka-1000, Bangladesh.

Telephone: +88-02-09612114444

Mobile: +88-01755647698

E-mail: ehsan@ifadgroup.com

Website: www.ifadautos.com

Line of Business:

Vehicles (Bus, Truck, Pickup, Dump Truck, Prime Movers, RMC, etc.), FMCG (Atta, Moida, Suzi, Chips, Biscuits, Noodles)

Area of Collaboration:

Export: FMCG, EV & Industrial Equipment

Import: Commercial Vehicle, Light Engineering:

CKD vehicles, Industrial equipment - Forklift, Air Compressor, Electric Bike, Bulk Charger, Auto parts like Engine parts, Brakes, Suspension, Transmission components, Sensors, Timing kits, Water pumps, Filters, Steering parts, Tire etc

Joint Venture: IT, FGCG, Automobile, Industrial Equipments

MEMBER OF THE DELEGATION



AHASAN HABIB

Proprietor

FingerTouch Services

Associated/Subsidiary Companies:

Intercare Services Ltd.

ARHA Global Logistics Ltd.

Corporate Address

House-22, Apt-B2, Road-18, Sector-03
Uttara, Dhaka-1230, Bangladesh.

Telephone: +88-02-48950129, +88-01786000321

Mobile: +88-01758632659

E-mail: ahasan@intercare-services.com

Website: www.intercare-services.com

Line of Business:

Textile, Leather, Footwear, Handicrafts, Freight Forwarding

Area of Collaboration:

Export: *Textile, Leather, Footwear, Handicrafts,
Freight Forwarding (Based on buyer Demand)*

Import: *Machinery and equipment, Electronic Equipment*

MEMBER OF THE DELEGATION



DR. LOKIAT ULLAH

Managing Director & CEO

Biopharma Limited

Associated/Subsidiary Companies:

**Bio Properties Ltd., Biopharma Agrovet Ltd.
Bio Food & Beverage Industries Ltd., BPL Housing Ltd.
Crescent Gastro-liver & General Hospital Ltd.
Euro Bangla Heart Hospital Ltd., Bio Natures Ltd.
& Hotel Coastal Peace**

Corporate Address

House No-01, Road No-01, Dhaka Housing
Adabar, Dhaka-1207, Bangladesh.

Mobile: +8801711868816, +8801714096044

Tel: +88-02-58157953, +88-02-58151661

Email: drlokiat@gmail.com/haris@biopharmabd.com

Web: www.biopharmabd.com

Line of Business:

*Pharma Products, Herbal and Nutraceutical Products, Agrovet & Crop
Care Products, Bio Food Products*

Area of Collaboration:

Export: *Pharmaceutical Finished Goods*

Import: *API, Excipients, Industrial Automation and Intelligent
Manufacturing, Processing Machinery Equipment, Powder Machinery,
General Machinery and Mechanical Basic Parts*

Joint Venture: *Medicines*

MEMBER OF THE DELEGATION



GAZI MOTIN HOSSAIN

Owner

Daphnia International

Corporate Address

C/13 Rowshon Mansion, South Badda
Dhaka, Bangladesh.

Mobile: +88-01780499936

E-mail: deepakgazi@gmail.com

Line of Business:

*Textile, Leather, Footwear, Handicrafts,
Freight Forwarding*

Area of Collaboration:

Export: RMG

Import: All kinds of Fabrics & Garments Accessories

MEMBER OF THE DELEGATION



MD. ABDUL AWAL

Managing Director

S. I. Garments

Corporate Address

23/2, Lasker-para, Sataish, Tongi
Gazipur 1712, Bangladesh.

Mobile: +88-01723941316
E-mail: info@sigarments.com
Website: www.sigarments.com

Line of Business:

Hoodie, Ladies Villager, Jacket, Polo Shirt,
T-shirt, Winter Shirt, Half Shirt, etc.

Area of Collaboration:

Export: Ready Made Garments

Import: All kind of Fabrics & Garments Accessories, Hand tools, Power tools, Pneumatic tools, Mechanical equipment, Mechanical and electrical products, Welding equipment, Abrasive tools, Home hardware, Building hardware, Other hardware or tools, Industrial Automation and Intelligent Manufacturing, Processing Machinery Equipment, Power Machinery and Electric Power, General Machinery and Mechanical Basic Parts, Construction Machinery, Agricultural Machinery, New Materials and Chemical Products

Joint Venture: China Fabrics and Accessories

MEMBER OF THE DELEGATION



MD. ABRARUL ALAM
Managing Director
EUR Service (BD) LTD.

Associated/Subsidiary Companies:

ECU WORLDWIDE (BD) LTD.
EUR LOGISTICS SERVICES LTD.
CRYSTAL EXPRESS LTD.
SKYWAYS SLS FRUGAL (BD) PVT. LTD.
SOUL AVIATION LTD.
EXG PROJECT LOGISTICS (BD) LTD.
SPEEDLINK LOGISTICS LTD.

Corporate Address

Rangs Paramount Square (6th Floor), House#11 Road#17
Banani C/A, Dhaka -1213, Bangladesh.

Telephone: +88-02-222274115-19
Mobile: +88-01711680094, +88-01713042493
E-mail: md@eurservicebd.com
Website: www.exg-bd.com

Line of Business:

Project Logistics, Freight Forwarding, Shipping Agent

Area of Collaboration:

Export, Import & JV: Freight Forwarding and Logistics Services

MEMBER OF THE DELEGATION



MD. MOHIN UDDIN BULBUL

Managing Director

EXFIN Bangladesh Limited

Associated/Subsidiary Companies:

Ocean Angel Freight Limited

Future Logistics (BD) Limited

Ayanz Mart (BD) Ltd.

Al Mughni International

Corporate Address

House-26 (4th Floor), Road No-02, Block-L
Banani, Dhaka-1213, Bangladesh.

Telephone: +88-02-41082418

Mobile: +88-01713477692

E-mail: mohin@exfinbd.com, Oaf11@oceanangelgroup.com

Website: www.oceanangelgroup.com

Line of Business:

Dry Foodstuffs, Freight Forwarding, Customs Brokerage, Warehousing, Project Cargo, Shipping Agent

Area of Collaboration:

Export: *Aromatic Rice, Spices, Snacks, Bakeries
Frozen Vegetable*

Import: *Dry Foods Raw Materials*

JV & Investment: *Frozen Vegetable, Frozen Sea Food
Fry Foods, Logistic Support*

MEMBER OF THE DELEGATION



MD. NUR ALAM

Founder & Managing Director

Naisha Enterprise Limited

Associated/Subsidiary Companies:

TNN Services Pvt. Limited

Naisha Motors

Corporate Address

Rupayan Shopping Square, Level -4th, Suite - 501, Plot: C-2, Block:
G, Sayem Sobhan Anvir Road, Bashundhara R/A, Dhaka,
Bangladesh.

Mobile: +88-01972161942 & 01712161942

E-mail: naishaenterprise@gmail.com

Website: www.naishaenterprise.org

Line of Business:

Transport Fleet Management Service, Petroleum Products (Lubricating Oil), Motor Vehicle Import, Retail & Leasing, Motor Parts Import & Selling

Area of Collaboration:

Import: *Vehicle Motors Spare Parts, Vehicle Tire Break Fluid*

JV & Investment: *Motor Spare Parts*

MEMBER OF THE DELEGATION



MD. REZAUL HAKIM

Chairman & Managing Director

Colorplus Masterbatch Mfg. Co. Ltd.

Associated/Subsidiary Companies:

Aristo Corporation Limited
Mountain Club Tours & Travels

Corporate Address

Rangs Pearl, Plot-76, Road-12, Block-E
Banani, Dhaka-1213, Bangladesh

Telephone: +88-02-028836182

Mobile: +88-01933777888

E-mail: shanto13@gmail.com

Website: www.plusgroupbd.com

Line of Business:

Masterbatch and Pharma Packing Materials

Area of Collaboration:

Export: Masterbatch, TPE & TPR, Tourism

Import: Raw Materials of Masterbatch, TPE & TPR, Plastic Resin

JV & Investment: TPE & TPR, Plastic Raw Materials

MEMBER OF THE DELEGATION



MD. SHAH ALAM

Proprietor

Alam & Associates

Corporate Address

53, Motijheel C/A, Modern Mansion
Dhaka-1000, Bangladesh.

Telephone: +88-02-9515624

Mobile: +88-01715040887

E-mail: md.shahalam62@yahoo.com

Line of Business:

Lubricating Oil and Grease, Chemicals, Automobile

Area of Collaboration:

Import: Industrial Lubricating Oil & Grease, Chemicals,
Skin, Hair & Body Care Products,
Cooking Oil (Soyabean, Sunflower, Olive Oil, Castor Oil
Black Seed Oil)

JV & Investment: Petroleum, Lubricating Oil and Grease, Chemicals

MEMBER OF THE DELEGATION



MIR SHAHRUKH ISLAM

Managing Director & CEO

Bondstein Technologies Limited

Associated/Subsidiary Companies:

Kyro Solutions LLC

Singularity Limited

Runner Automobiles Limited

Corporate Address

Level 4, 138/1, Tejgaon I/A

138, 1 Bir Uttam Mir Shawkat Sarak

Dhaka 1208, Bangladesh.

Mobile: +88-01727654326, +88-01847069230

Email: shahrukh@bondstein.com

Website: bondstein.com

Line of Business:

*AI Solutions, IOT Solutions, Vehicle Tracking, Engineering Resource
Outstaffing, Design Services, BPO*

Area of Collaboration:

Export: *IoT Solutions, Telematics Software, AI-driven industrial
monitoring service, Smart Home Devices*

Import: *Electronic components and hardware for
IoT device manufacturing, GPS Tracking System,
AI Chip and Telecommunication accessories*

JV & Investment: *Establishing IoT device manufacturing
facilities and smart technology R&D*

MEMBER OF THE DELEGATION



RASHAD KABIR

Managing Director

Dream71 Bangladesh Limited

Corporate Address

Hyatt Rose Park (Level-05), House-16, Block-A
Bashundhara Main Road, Bashundhara R/A
Dhaka- 1229, Bangladesh.

Tel: +8809678711971

Mobile: +8801715091734

Email: rashad@dream71.com

Website: www.dream71.com

Line of Business:

TSoftware Development, Mobile Apps Development, Artificial Technology, Sales & HR Software, E-Governance Solution, Blockchain, Animation and Content Development, Game Development

Area of Collaboration:

Export: *Software Development, Mobile Apps Development, Artificial Technology, Sales & HR Software, E-Governance Solution, Blockchain, Animation and Content Development, Game Development*

Import: *Information Technology Enable Services*

JV & Investment: *Software Outsourcing Partnership*

MEMBER OF THE DELEGATION



SHAIKH EHSANUL HABIB

Managing Director
Green Power Ltd.

Corporate Address

2/4 UAE Moitry Complex (1st Floor) (4F/1)
Kemal Ataturk Avenue, Banani
Dhaka-1213, Bangladesh.

Tel: +88-02-222274885, 222274959

Mobile: +88-01711537474

Email: ehsan@greenpowerbd.com

Website: www.greenpowerbd.com

Line of Business:

Power Sector, Solar System, Generator, Digital Security Device

Area of Collaboration:

Import: *Solar System, Renewable Energy Equipment, PV Panel,
Inverter, BESS, EMS Software, etc.*

JV & Investment: *Renewable Energy*

MEMBER OF THE DELEGATION



SHEIKH A. H. MD. IMTIAZ HOSSAIN

Proprietor

F A International

Associated/Subsidiary Companies:

SK Intiaz Hossain & Associates

Corporate Address

Khan Plaza, 205/4, Fokirapole Kalvart Road
Motijheel, Dhaka-1000, Bangladesh.

Mobile: +88-01789671709

E-mail: skintiaz2004@gmail.com

Website: www.faintbd.net

Line of Business:

Oil & Gas Industry-Exploration and Production, Gas Transmission and Distribution Pipeline Networks, Power Plant /Generation Companies, Urea & Other Fertilizers Factories/ Industries, Pharmaceuticals/Petrochemical/Chemical Industries, etc.

Area of Collaboration:

Import: Machinery, Spare Parts & Equipment

JV & Investment: Machinery, Spare Parts & Equipment, Gas, Power Sector

MEMBER OF THE DELEGATION



SK SHAHIDULLAH

Managing Director

Al-Arafah Power Engineering Ltd.

Associated/Subsidiary Companies:

Al-Amin Trade International

Corporate Address

85/1-A, Purana Paltan Line,
Paltan, Dhaka-1000, Bangladesh.

Office Telephone: +88-01771765589
Mobile: +88-01941732390, 01611194594
E-mail: alarafahpel@gmail.com
Website: www.aapeltdbd.com

Line of Business:

Wires, Switches, Sockets, Circuit Breakers, Waste Fabrics

Area of Collaboration:

Export: Waste Fabrics

Import: Dry Foods Raw Materials

JV & Investment: Electric Goods (Wires, switches, sockets, circuit breakers, etc.), Hardware Materials, Tools & Maintenance Equipment

DELEGATION COORDINATORS



A H M MANIRUZZAMAN

Additional Executive Secretary
Trade Facilitation & International Affairs Department
Dhaka Chamber of Commerce & Industry (DCCI)

Dhaka Chamber Building (4th floor)
65-66 Motijheel C/A, Dhaka-1000, Bangladesh.
Tel: +88-02-47122988, Mobile: +88-01826622405 (WeChat)
E-mail: maniruzzaman@dhakachamber.com



MD. ABU SAYED

Senior Officer
PR & Event Department
Dhaka Chamber of Commerce & Industry (DCCI)

Dhaka Chamber Building (4th floor)
65-66 Motijheel C/A, Dhaka-1000, Bangladesh.
Tel: +88-02-47122988, Mobile: +88-01886770313 (WeChat)
E-mail: sayed@dhakachamber.com



DCCI BUSINESS DELEGATION TO GUANGZHOU, CHINA

15th to 20th April, 2026

Programme Itinerary

Date	Time	Activities	Venue
15 th April 2026	01:15 pm	Departure from Hazrat Shahjalal International Airport, Dhaka	<i>Airlines: China Southern Airlines, Flight No: CZ 5016</i>
	07:05 pm	Arrival at Guangzhou Baiyun International Airport	
16 th April 2026	09:20 am – 12:00 pm	B2B Matchmaking Session at Guangzhou Sourcing Fair	<i>Poly World Trade Center Expo in Pazhou, Haizhu District, Guangzhou</i>
	01:30 pm – 06:00 pm	Explore the Guangzhou Sourcing Fair	
17 th April 2026	10:00 am – 12:00 pm	Business Networking Meeting organized by CCPIT Guangzhou Nansha in collaboration with Guangzhou Nansha Association of Trade in Services, and Guangzhou Nansha Bird Park	<i>Guangzhou Nansha Bird Park, No. 1 Xingang Avenue, Wanqingsha Town, Nansha District, Guangzhou</i>
	02:00 pm – 05:00 pm	B2B Matchmaking Session organized by Guangdong Chamber of Commerce of Importers & Exporters	<i>Venue: Yuexiu Guanyue, 223 meters northwest of the intersection of Dijin West Street and Yuejing Road, Tianhe District, Guangzhou City, Guangdong Province</i>
	07:00 pm – 08:30 pm	Open B2B Networking on the River Cruise & Dinner organized by China Chamber of Commerce for Import and Export of Machinery and Electronics Products (CCME)	<i>1. Boarding on the cruise: Boat Terminal - Canton Tower Terminal (Guangzhou Tower Pier) 2. Berth for disembarkation: Hai Xin Sha Pier.</i>
18 th April 2026	10:00 am – 12:00 pm	"Trade Bridge" Bangladesh Matchmaking Event organized by China Foreign Trade Centre	<i>China Import and Export Fair Complex (Pazhou Complex), Guangzhou</i>
	01:00 pm – 05:30 pm	Explore the Canton Fair	
19 th April 2026	09:30 am – 11:30 am	Business Networking Meeting organized by Guangzhou Overseas Enterprises Chamber of Commerce	<i>Secretariat of Guangzhou Overseas Enterprises Chamber of Commerce (2nd Floor, Building 5, Ju Da International Industrial Park, Panyu District)</i>
20 th April 2026	09:35 am	Departure from Guangzhou Baiyun International Airport	<i>Airlines: China Southern Airlines, Flight No: CZ 5015</i>



DHAKA CHAMBER OF COMMERCE & INDUSTRY

Corporate Address

Dhaka Chamber Building (4th Floor), 65-66 Motijheel C/A
Dhaka-1000, Bangladesh.

Tel: +88-02-471-22-986 (Hunting)

E-mail: info@dhakachamber.com

Web: www.dhakachamber.com