



# DHAKA CHAMBER BUSINESS DELEGATION

*Destination*  
**VIETNAM**

04-09 August, 2024



ঢাকা চেম্বার অব কমার্স ইন্ডাস্ট্রি

[www.dhakachamber.com](http://www.dhakachamber.com)

# DHAKA CHAMBER BUSINESS DELEGATION



ঢাকা চেম্বার অব কমার্স অ্যান্ড ইন্ডাস্ট্রি

## DHAKA CHAMBER OF COMMERCE & INDUSTRY

Dhaka Chamber Building (4<sup>th</sup> floor)  
65-66 Motijheel Commercial Area  
Dhaka-1000, Bangladesh.  
Telephone: +88-02-471-22-986 (Hunting)  
IP Phone: +88-09-666888555  
Fax: +88-02-223380830  
Email: [info@dhakachamber.com](mailto:info@dhakachamber.com)  
Website: [www.dhakachamber.com](http://www.dhakachamber.com)

## DHAKA CHAMBER OF COMMERCE & INDUSTRY

Dhaka Chamber of Commerce & Industry incorporated under Companies Act, in the year 1958, is the largest and most vibrant Chamber of the country. It has been a pioneer in rendering service for the development of private sector business and industry in Bangladesh for over five decades. DCCI represents more than 38 categories of small, medium and large entrepreneurs contributing towards development of economy and employment generation.

A Board of Directors of Eighteen Members headed by a President, supported by a Senior Vice President and a Vice President run DCCI. The President, Senior Vice President and Vice President are elected by the Board every year. One third of the Directors are elected every year for a term of three years.

### Objectives and Functions of DCCI

DCCI aims to promote trade, investment and industrialization in the country. It has proven record of contribution towards the development of business sector of Bangladesh. Some of the important functions of DCCI are:

- ★ To give market oriented inputs for formulation and implementation of government policies in respect of import, export, industry, investment, banking, insurance, fiscal measures and annual budget etc;
- ★ To prepare materials for various conferences relating to WTO, UNCTAD, SAPTA, SAFTA, BIMSTEC, D-8 and OIC-TIPS etc;
- ★ To represent trade commerce and industry on various advisory or consultative committees at different ministries and departments of the government;
- ★ To comment on national and international legislative measures affecting trade, commerce and industry;
- ★ To function as a forum for exchanging views on trade and economy among different Chamber members, Government agencies, DCCI members and local or foreign business delegations;

- ★ To disseminate business related information to the members;
- ★ To publish trade and investment related information, analysis, guide books on a monthly or yearly basis;
- ★ To organize training courses, seminars/workshops/symposia, trade delegations, trade fairs and participation thereof at home and abroad;
- ★ To undertake activities like survey, research etc. for suggesting favourable business related policies;
- ★ To prepare Economic Policy Papers (EPPs) for conducting policy advocacy for the benefit of the business sector;
- ★ To sign Memorandum of Understanding (Molls) with overseas Chambers and other business organizations;
- ★ To prepare, implement and evaluate projects for entrepreneurship development and to deliver time bound, need-based and diversified services to the business community;
- ★ To help women entrepreneurs to promote and expand their businesses.

## Services

Dhaka Chamber provides some other services like; supplying of Business Information, Documentation, Commercial Library etc. The Chamber's aim is to provide opportunities to its members which otherwise would have been almost beyond their reach.

DCCI's Services also cover training courses, seminars, webinars, workshops, dialogues, discussion meetings, international conferences, press meets and different types of publications. Members are kept posted with all important notifications/circulars/tenders issued by the Government and Autonomous Bodies concerning trade, commerce, industry, money, banking, finance, labour etc. through general and special circulars.

# BANGLADESH COUNTRY PROFILE

Official Name	: The People's Republic of Bangladesh
Form of Government	: Parliamentary System
Head of the State	: President
Head of the Government	: Prime Minister

## Geographical Location:

Between 20° 34' to 26° 38' North Latitude  
and 88°01' to 92°41' East Longitude

## Boundary

North: India (West Bengal & Meghalaya), West:  
India (West Bengal), East: India, (Tripura & Assam)  
and Myanmar, South: Bay of Bengal

## Land Area

147,570 sq. km (56,977 sq miles) (Territorial  
sea-12 nautical miles, Exclusive Economic  
Zone-200 nautical miles)

## Maritime Area:

118,813 sq. km (Territorial Sea-12  
nautical miles, Exclusive Economic  
Zones- 200 nautical miles)

## Capital City

Dhaka Metropolitan Area 522 sq. km.

## Standard Time

GMT +6 hours

## Currency

Taka (BDT)

## Literacy Rate

77.9% (7+ years, BBS)

75.6% (15+ years, BBS)

## Dialing Code

+880

Internet domain  
.bd

## Climate

Tropical; Mild Winter (October to March); Hot, Humid Summer (March to June); Humid- Warm Rainy Monsoon (June to October)

## Total Rainfall

2115 mm

## Highest peak

Keokradong (Bandarban Hill District) 1,230 m

## Tourist Season

October to March

### Population

172.92 million (FY2022-23, BBS)

### Life expectancy

70.8 years (men), 73.8 years (women), 72.3 years (Average)

### Per Capita Income

USD 2784, Projected.

### Labor force

by occupation: agriculture: 44%, industry: 17%, services: 39% (BLFS, BBS)

### Language

95% Bengali, 5% other dialects. English is widely understood and spoken.

### Religion

Muslim (91%), Hindu (8%), Buddhist (0.6%), Christian (0.3%) and others (0.1%).

### Food

Rice, bread, fruits, vegetables, pulses, fish, meat and potato

### Principal Industries

Jute, Tea, Textiles, Ready Made Garments (RMG), Paper & Paper Products, Fertilizer, Leather & Leather Goods, Sugar, Cement, Fish Processing, Pharmaceuticals, Chemical Industries, Plastic and Ceramics.

### Major Trading Partners

USA, EU countries, India, China, Japan, South Korea, Australia, Malaysia, Hong Kong, Taiwan, Indonesia, Thailand, Saudi Arabia, UAE etc.



### Traditional Export Goods

Raw Jute, Jute Goods, Tea, Leather & Leather Goods etc.



### Principal Imports

Petroleum products, Food Grains, Oil seeds, Crude Petroleum, Fertilizer, Cement Clinker, Staple Fibers, Yarn, Fabrics, Iron & Steel, Capital Machineries, Automobiles Raw Cotton etc.

### Non-traditional Exports

Ready-Made Garments: Woven & Knitwear, Frozen Shrimps, Other Fish products, Jute Carpet, Shoes and other leather goods, Newsprint, Paper, Naphtha, Furnace Oil, Urea, Fruits & Vegetables, Cut Flower, Handicrafts, Jewelries.

### Import Partners

China, India, Singapore, Malaysia, Indonesia, Japan, Malaysia, USA, Rep. of Korea, UAE, Saudi Arabia etc.

### Export Partners

USA, Germany, UK, France, Spain, Italy, Poland, Canada, The Netherlands, Sweden, Australia etc.

### International Airports

Dhaka International Airport, Dhaka, Shah Amanat International Airport, Chittagong and Osmani International Airport, Sylhet.

### Domestic Airports

Cox's Bazar, Cumilla, Saidpur, Shah Makhdum, Jashore, Barishal and Ishhurdi.

### Domestic Airlines

Public Sector: Biman Bangladesh Airlines, Private Sector: US-Bangla Airlines, Novoair, Air Astra, Bismillah Cargo, Skyair Cargo, Easy Fly Express Cargo etc.



### Sea Ports

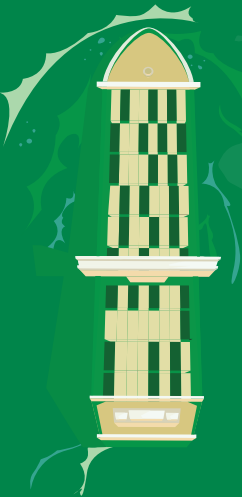
Chattogram, Mongla and Payra

### Inland River Ports

Dhaka, Chandpur, Barishal, Khulna, Bhairab, Naryanganj, Sirajganj, Ashuganj, Pangaon.

### Land Ports

Benapole, Teknaf, Banglabandha, Sonamasjid, Hili, Darshana, Birol, Burimari, Tamabil, Haluaghat, Akhaura, Bibirbazar and Bhomra.



### Communications

Railways: 3,0188.88 km,  
Roadways: total: 21,481 km,  
Waterways: 24,000 km (Navigable  
– 5,968 km)



#### Radio Broadcast Station

Dhaka, Chattogram, Rajshahi, Khulna,  
Sylhet, Cumilla, Rangpur, Barishal, Cox's  
Bazar, Bandarban, Rangamati and  
Thakurgaon.

### TV Broadcast

Bangladesh Television, BTV World,  
Sangsad TV, Channel I, ATN Bangla, NTV,  
Channel 24, Somoy TV, Independent TV  
etc.



### Print Media

The Daily Star, The Financial Express,  
New Age, Prothom alo, Jugantor,  
Ittefaq, Inquilab etc. are some  
prominent dailies.

### Satellite Station

Betbunia and Talibabad



### News Agency

Bangladesh Sangbad Sangstha  
(BSS), UNB, Bdnews24.com etc.

**Source:** Bangladesh Bureau of Statistics, Monthly Statistical Bulletin-Bangladesh, Bangladesh Labor Force Survey 2022, Sample Vital Registration System (SVRS) 2023, National Accounting Wing, Statistical Pocket Book 2023, BIDA, Export Promotion Bureau (EPB), Ministry of Finance and different Government published sources.

## TRADE POSITION BETWEEN BANGLADESH AND VIETNAM

(Figure in Million USD)

Fiscal Year (July-June)	Export	Import	Trade Balance	Total Trade
2017-2018	55.67	688.00	(-) 632.33	743.67
2018-2019	53.47	545.90	(-) 492.43	599.37
2019-2020	48.16	555.10	(-) 506.94	603.26
2020-2021	61.29	678.60	(-) 617.31	739.89
2021-2022	92.77	1009.96	(-)917.19	1102.73
2022-2023	96.22	1010.60	(-) 914.38	1106.82

SL. No.	Major Export Items from Bangladesh to Vietnam	USD Mn.
1.	391590: Waste, parings and scrap, of other plastics	7.06
2.	620342: Men's or boys' trousers, breeches, etc, of cotton	6.61
3.	261900: Slag, dross, etc, from the manufacture of iron or steel	6.08
4.	284700: Hydrogen peroxide	5.46
5.	620920: Babies' garments and clothing accessories of cotton	5.45
6.	300490: Other medicaments of mixed or unmixed products, for retail sale	4.67
7.	520300: Cotton, carded or combed	4.55
8.	620462: Women's or girls' trousers, breeches, etc, of cotton	4.42
9.	410419: Tanned, in the wet state wet-blue other than full grains unplait, grain splits	4.01
10.	620520: Men's or boys' shirts of cotton	3.65

SL. No.	Major Import Items from Vietnam to Bangladesh	USD Mn.
1.	110000 Textiles & Textile Articles	352.29
2.	050000 Mineral Products	270.75
3.	160000 Machinery and mechanical appliances; electrical equipment; parts thereof; sound recorders and reproducers, television image and sound recorders and reproducers; and parts and accessories of such articles	109.31
4.	060000 Products of the Chemical or Allied Industries	83.54
5.	070000 Plastics & Rubber Articles Thereof	63.62
6.	020000 Vegetable Products	33.39
7.	100000 Pulp of wood or of other fibrous cellulosic material; recovered (waste and scrap) paper or paperboard; paper and paperboard and articles thereof	23.03
8.	080000 Raw Hides and Skins, Leather and Articles Thereof; Saddlery and Harness; Travel Goods, Handbags Similar Containers; Articles of Animal Gut	22.51
9.	150000 Base Metals & Articles of Base Metal	18.97
10.	120000 Footwear, Headgear, Umbrellas, Sun Umbrellas, Walking Sticks, Seat-Sticks, Whips, Riding-Crops and Parts Thereof	9.60

Source: Export Promotion Bureau and Bangladesh Bank

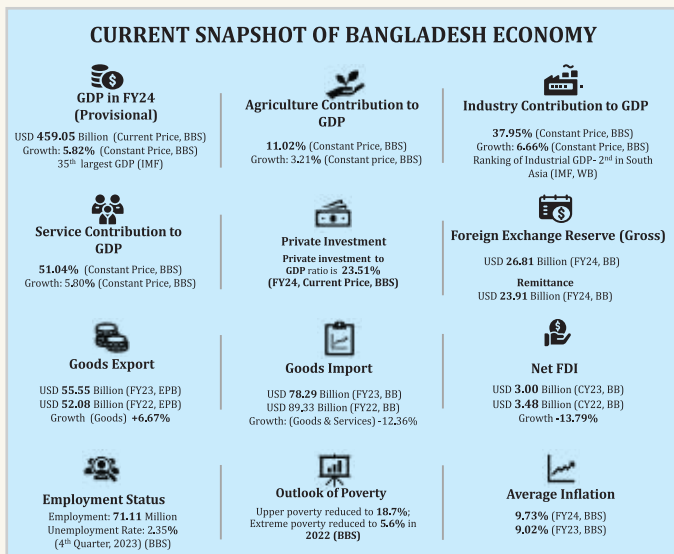
## BANGLADESH ECONOMY: A BRIEF OVERVIEW

Despite the challenging global economic conditions and geopolitical crisis, Bangladesh successfully managed the macroeconomic shock with prudent and resilient macroeconomic policies maintaining a consistent growth trajectory. According to the World Bank Group, Bangladesh has a strong track record of growth and development, even in times of elevated global uncertainty. Bangladesh has achieved average annual growth 6% over the last decade, backed by a robust demographic dividend, resilient exports, remittance inflows and stable macroeconomic conditions. In this period, the country has experienced a notable upsurge in road infrastructure and connectivity. The mega infrastructure projects such as Padma Bridge, Dhaka Elevated Expressway, the third terminal of Hazrat Shahjalal International Airport, Bangabandhu Sheikh Mujibur Rahman Tunnel, Metro-rail have already started to influence the country's economic activity and significantly contributed to trade, business, and socio-economic growth. Dhaka is now in the distinct club of 205 cities in 61 countries that currently have Metrorail systems. Besides, the construction of Rooppur Nuclear Power Plant is a major milestone for the country to become the 33<sup>rd</sup> nuclear power country in the world. Furthermore, the successful launch of the Bangabandhu Satellite-1 is another significant milestone in boosting the country's economy by providing breakthrough telecommunications services to all citizens. It's worth highlighting that self-financed construction of the Padma Multipurpose Bridge has elevated the status of Bangladesh as financially prudent nation in the world. Recognizing the progress of Bangladesh, Time magazine termed Bangladesh as an economic rising star for its remarkable transformation in the 21<sup>st</sup> century. Exploiting opportunities from these infrastructures and connectivity is expected to boost investment and employment, potentially leading to a strong growth rate in Fiscal Year 2024-2025 (FY25) and steering the economy smoothly towards the ultimate goal of becoming a developing economy by 2026 followed by a developed economy by 2041. The GDP for FY24 is expected to be USD 459 billion with USD 2675 per capita GDP at current prices, according to Bangladesh Bureau of Statistics (BBS). It has been estimated that the GDP Per Capita of Dhaka district is USD 5163 in FY2022-23.

### **Economic Growth and its key Sectors**

Bangladesh's economy has demonstrated notable resilience and strong growth in the post-pandemic era, with real GDP expanding by 6.94% in FY21 and 7.10% in FY22. The recovery was driven by significant progress in the industrial and service sectors, supported by robust domestic and international demand. However, growth moderated to 5.78% in FY23, influenced by persistent high inflation, substantial depreciation of the Bangladesh Taka (BDT), and challenges stemming from global uncertainty and adverse

conditions such as slower-than-expected growth and rising inflation in key trade partners and remittance sources. Despite these challenges, growth saw a modest rebound to 5.82% in FY24, as per provisional estimates from the Bangladesh Bureau of Statistics (BBS).



Per capita national income is expected to reach USD 2,784 in FY24. The domestic savings (gross) and national savings are also expected to contribute to 27.61% and 31.86% of GDP respectively for the same period. The gross investment is expected to be 30.98% of GDP in FY24, with public investment accounting for 7.47% and private investment for 23.51% of GDP, respectively.<sup>1</sup>

The economic achievements are reflected in the GDP ranking of the world. According to the World Economic League Table, Bangladesh is now the 34<sup>th</sup> largest economy and if the current trend of economic development in Bangladesh continues, it will be the 23<sup>rd</sup> largest economy in the world by 2033, according to the Center for Economics and Business Research (CEBR), a UK-based economic research organization. IMF also said sustained structural reforms are required to achieve Bangladesh's goal of reaching upper middle-income country status by 2031. Export diversification, foreign direct investment are key factors of economic development in the days to come.

The growth rate of major sectors in constant price is given below to portray the scenario of macro-economy.

## Agriculture

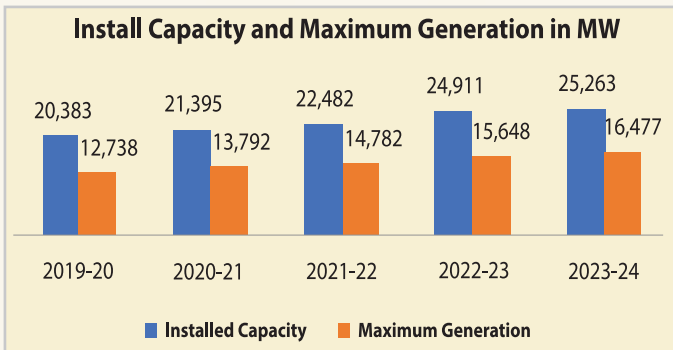
In FY2023-24, the contribution of Agriculture to GDP is expected to be 11.02% which was 11.30% in FY2022-23. During FY2023-24, the contributions of major agricultural sub-sectors like crops and horticulture, animal farming, forestry and related services, and fishing to GDP are expected to be 5.15%, 1.80%, 1.69% and 2.38% respectively in contrast to 5.30%, 1.85%, 1.70% and 2.45% in FY2022-2023, stated in Appendix (Table-1).<sup>2</sup>

## Industry

The contribution of industry to GDP is expected to be 37.95% in FY2023-24, which was 36.65% in the previous fiscal year. The main contributor to the industry's share in GDP is the manufacturing sector which is expected to have a 25.07% share in total industrial share in GDP in FY2023-24, up from 24.89% in the previous year. Electricity (including gas) and Construction hold respectively 1.12% and 9.75% of the industry's share in GDP in FY2023-24, which were 1.19% and 9.60% in FY2022-23 accordingly, stated in Appendix (Table-1).<sup>3</sup>

## Electricity and Power

The government has undertaken immediate, short-term, medium-term and long-term strategies to address the rising demand for electricity. As per vision 2041, government is working towards the implementation of power generation capacity of 40,000 MW by 2030 and 60,000 MW by 2041 as per Power System Master Plan (PSMP), leveraging both renewable and non-renewable energy sources, with a particular emphasis on clean and renewable energy. The installed generation capacity of the country has increased to 25,263<sup>4</sup> Megawatt (MW) in FY2023-24 except captive and renewable energy 4,173 Megawatt (MW) in FY2023-24 and the maximum generation also increased 16,477 Megawatt (MW) of the same fiscal year.<sup>5</sup>



## Services

The contribution of the service sector to GDP and the sectoral growth rate of GDP are expected to be 51.04% and 5.80% respectively in FY2023-24, which were 51.05% and 5.37% respectively in the previous fiscal year. The service sector in Bangladesh comprised of several other sub-sectors. Within the service sector, the shares of wholesale and retail trade, transportation and storage, financial and insurance activities, real estate activities, public administration and defense, education, human health and social work, and other services are expected to be 15.32%, 7.25%, 3.05%, 7.77%, 3.53%, 2.74%, 3.57%, and 4.43% respectively compared with 15.26%, 7.29%, 3.07%, 7.92%, 3.48%, 2.68%, 3.43%, and 4.54% in the previous fiscal year, stated in Appendix (Table-1).<sup>6</sup>

## Monetary Sector

Private sector credit growth target has been lowered for the H1FY25 to 9.8%, down from 10% for the H2FY24. Bangladesh Bank (BB), the country's central bank has taken several initiatives to contain money supply to the market by reducing its credit growth to the private sector. However, the actual growth till June of FY24 stood at 9.8%. The weighted average nominal lending rate experienced an increase, rising from 11.28% in May 2024 to 7.31% in June 2023. Similarly, the weighted average nominal deposit rate also saw an upward shift, reaching 5.42% in May 2024 compared to 4.38% in June 2023. The interest rate spread (the difference between the lending rate and deposit rate) also increased to 5.86% in May 2024 from 2.93% in June 2023. Besides, BB keep the policy rate unchanged at 8.50%. Accordingly, the Standing Deposit Facility (SDF) and Standing Lending Facility (SLF) rates also remain unchanged at 7% and 10% respectively. Despite some moderation, CPI inflation remained above 9% throughout H2FY24. However, coordinated policy initiatives and global commodity price temperance are expected to continue reducing CPI inflation in the coming months. Bangladesh Bank aims to bring down inflation to or around 6.5% at the end of FY2025.<sup>7</sup>

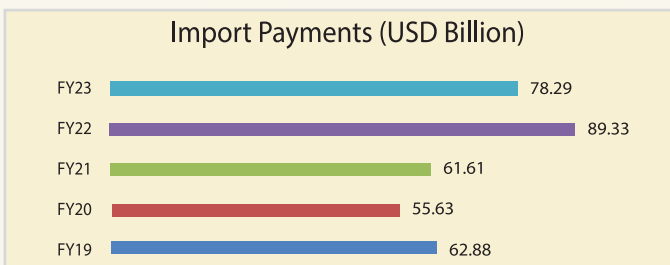
## Export

Export volume in FY2022-23 increased by 3.43% to USD 63.06 billion, which was USD 60.97 billion in FY2021-22. The export of Ready-made garments has contributed to the lion's share (84.58%) of the country's exports. In FY23, RMG (knitwear and woven garments) exports experienced 10.27% growth, other commodities export experienced growth like Live Fish 129.55%, Paper and Paper Products 118.33%, Plastic Products 26.23%, Leather Products 17.40%.<sup>8</sup> During FY2022-23, the highest export was 17% in the USA followed by 13% in Germany, 10% in the UK, and 7% in Spain.



## Import

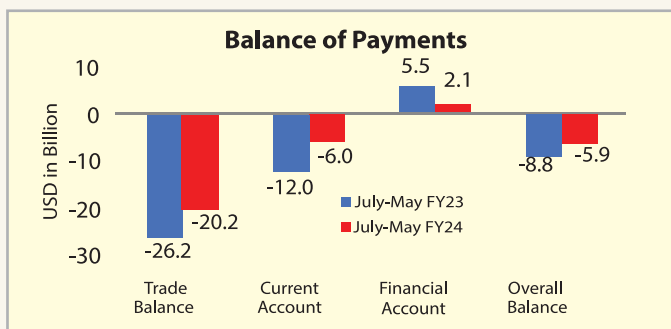
Import Payments of Goods and Services in FY2022-23 decreased by 12.36% to USD 78.29 billion compared to USD 89.33 billion in FY22, supported by a notable depreciation of the exchange rate and several policy initiatives taken by BB for containing import demand. However, the commodity composition of import discloses that imports of all categories, including intermediate goods, capital goods, and consumer goods, except for food grains, experienced a decline during this period following prudent monitoring by BB. Notable decreases include a 27.09% reduction in the import of petroleum, oil, and lubricants, a 20.06% decrease in textile and related articles, and a 16.85% decline in iron, steel, and other base metals. The only exception to this trend was fertilizer, which witnessed an increase of 11.89%.<sup>9</sup>



## Balance of Payments

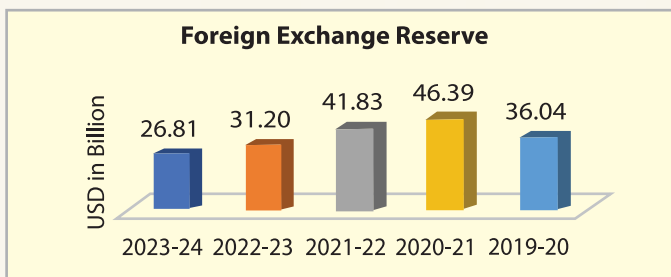
The country registered a trade deficit of USD 20.02 billion in July-May FY24. On the other hand, the current account deficit narrowed to USD 5.98 billion in July-May FY24 from USD 12.02 billion in the corresponding period of FY23. This improvement resulted from a sharper contraction in imports than exports and moderate remittances inflows.

Despite a historically healthy surplus, the financial account saw a decline, dwindling to USD 2.08 billion in the first eleven months of FY24 from USD 5.52 billion in the same period of FY23. This downward trend was driven largely by a reversal of net trade credit to a deficit due to delayed repatriation of export receipts and higher repayment of short-term private external borrowings amidst high global borrowing costs and economic uncertainties. Despite the deterioration of the financial account surplus, the narrowing current account deficit resulted in an overall Balance of Payment (BoP) improvement. The overall BoP deficit reduced to USD 5.88 billion in July 2023-May 2024 from a high of USD 8.80 billion in the corresponding period of FY23.<sup>10</sup>



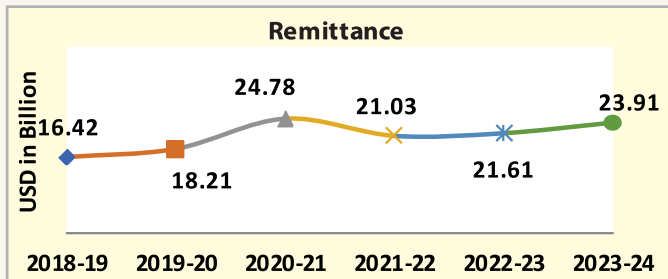
### Foreign Exchange Reserve

In FY2023-24, the gross foreign exchange reserve of Bangladesh stood at USD 26.81 billion which was 14.07% less than the corresponding period of the previous year's USD 31.20 billion. However, this level of foreign exchange reserve was enough to maintain the about 5 months of prospective import payments of goods.<sup>11</sup>



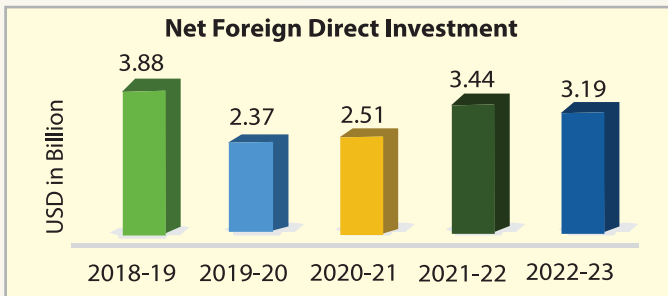
## Remittance

Remittance is a pivotal source of bagging foreign exchange earnings for Bangladesh. During FY2023-24, remittance inflow stood at USD 23.91 billion which is an increase of 10.64% from the corresponding previous fiscal year. Remittance inflow in Bangladesh has always shown a steady increase. However, the inflow of remittances is expected to be stronger in the period ahead with the favor of high growth in overseas employment, supportive measures of BB and market-driven depreciation of exchange rates. Therefore, the overall balance of payments might improve in the future period.<sup>12</sup>



## Foreign Direct Investment (FDI)

FDI net inflow reached USD 3.19 billion in FY23, which was USD 3.44 billion in the previous fiscal year. FDI trend in Bangladesh exhibited an increasing trend up to FY 2018-19. Due to decreased financial activity worldwide during the COVID-19 outbreak. The FDI trend has recovered to its pre-pandemic level in FY2021-22. According to World Investment Report 2023, though global FDI declined to \$1.3 Trillion by 12% our local FDI remains moderately stable. But in FY23, net FDI inflows also declined due to rising global economic uncertainties.<sup>13</sup>



## Appendix

**Table-1: Sectoral Share of GDP at Constant Prices (Base:2015-16)**

Industrial origin sector	2019-20	2020-21	2021-22	2022-23	2023-24 (p)
<b>A. Agriculture</b>	<b>12.52</b>	<b>12.07</b>	<b>11.61</b>	<b>11.2</b>	<b>11.02</b>
<b>1 Agriculture, Forestry and Fishing</b>	12.52	12.07	11.61	11.2	11.02
a) Crops & Horticulture	5.96	5.70	5.46	5.25	5.15
b) Animal Farming's	2.06	1.98	1.91	1.85	1.80
c) Forest and Related Services	1.78	1.75	1.72	1.7	1.69
d) Fishing	2.71	2.64	2.53	2.41	2.38
<b>B. Industry</b>	<b>34.94</b>	<b>36.01</b>	<b>36.92</b>	<b>37.56</b>	<b>37.95</b>
<b>2 Mining and quarrying</b>	1.91	1.91	1.76	1.75	1.90
a) Natural Gas and Crude Petroleum	0.43	0.40	0.36	0.33	0.29
b) Other Mining & Coal	1.49	1.51	1.4	1.42	1.61
<b>3 Manufacturing</b>	22.40	23.36	24.29	24.95	25.07
a) Large Industry	11.43	11.81	12.75	13.01	13.10
b) Small, Medium and Micro Industry	7.04	7.49	7.33	7.57	7.60
c) Cottage Industry	3.94	4.06	4.21	4.38	4.36
<b>4 Electricity, Gas, Steam and Air Condition</b>	1.22	1.25	1.23	1.21	1.12
a) Electricity	0.97	1.01	1.01	1.01	0.93
b) Gas	0.25	0.24	0.22	0.21	0.19
<b>5 Water supply; sewerage, waste management</b>	0.10	0.10	0.1	0.1	0.10
<b>6 Construction</b>	9.31	9.40	9.54	9.55	9.75
<b>C. Services</b>	<b>52.54</b>	<b>51.92</b>	<b>51.48</b>	<b>51.24</b>	<b>51.04</b>
<b>7 Wholesale and retail trade; repair of.</b>	14.97	15.06	15.24	15.29	15.32
<b>8 Transportation and storage</b>	7.65	7.44	7.34	7.32	7.25
a) Land Transport	6.70	6.56	6.49	6.5	6.47
b) Water transport	0.53	0.51	0.48	0.44	0.42
c) Air transport	0.09	0.08	0.08	0.08	0.08
d) Warehousing and support activities	0.28	0.25	0.25	0.26	0.24
e) Postal and courier activities	0.04	0.04	0.04	0.04	0.04
<b>9 Accommodation and food service activities</b>	1.12	1.09	1.08	1.07	1.07
<b>10 Information and communication</b>	1.29	1.29	1.26	1.25	1.27
<b>11 Financial and insurance activities</b>	3.26	3.22	3.19	3.17	3.05
a) Monetary intermediation (Banks)	2.78	2.75	2.73	2.72	2.60
b) Insurance	0.28	0.27	0.26	0.25	0.25
c) other financial auxiliaries	0.20	0.20	0.2	0.2	0.20

Note: 'p' denotes provisional

Industrial origin sector	2019-20	2020-21	2021-22	2022-23	2023-24 (p)
12 Real estate activities	8.68	8.39	8.12	7.93	7.77
13 Professional, scientific and technical	0.18	0.18	0.17	0.17	0.18
14 Administrative and support service action	0.74	0.73	0.72	0.72	0.73
15 Public administration and defence	3.56	3.52	3.45	3.47	3.53
16 Education	2.71	2.68	2.69	2.71	2.74
17 Human health and social work activities	3.21	3.32	3.4	3.46	3.57
18 Arts, entertainment and recreation	0.15	0.14	0.14	0.14	0.14
19 Other service activities	5.03	4.85	4.67	4.54	4.43
<b>Total GVA at constant basic price</b>	<b>100.00</b>	<b>100.00</b>	<b>100.00</b>	<b>100.00</b>	<b>100.00</b>

**Table 2. Per capita GDP and GNI at Current Prices (Base: 2015-16)**

		2020-21	2021-22	2022-23	2023-24 (p)
GDP	(Million Tk.)	35,301,848	39,717,164	44,908,417	50,480,274
GNI	(Million Tk.)	37,159,966	41,290,624	46,700,802	52,531,332
Population	(Million No.)	169.11	171.30	170.79	171.59
Per Capita GDP	(In Tk.)	208,751	231,861	262,868	294,191
Per Capita GNI	(In Tk.)	219,738	241,047	273,360	306,144
Exchange Rate	(Taka per USD)	84.81	86.30	99.46	109.97
GDP	(Million USD)	416,264	460,219	451,534	459,046
GNI	(Million USD)	438,175	478,451	469,556	477,697
Per Capita GDP	(In USD)	2,462	2,687	2,643	2,675
Per Capita GNI	(In USD)	2,591	2,793	2,749	2,784

**Note: 'p' denotes provisional**

01 GDP, Bangladesh Bureau of Statistics (BBS), (Base Year: 2015-16)

02 GDP of Bangladesh FY2023-24, BBS

03 Bangladesh Economic Review, FY2023-2024

04 National Database of Renewable Energy, SREDA

05 Bangladesh Energy Regulatory Commission

06 GDP, Bangladesh Bureau of Statistics (BBS)

07 Monetary Policy Statement (July-December 2024, BB)

08 Pocket Export Statistics, EPB, FY2022-2023

09 Commodity-Wise Import payments Recorded by Customs, Economic Data, BB

10 Monetary Policy Statement, H1FY25

11 Economic Data, Economic Statistics, Foreign Exchange Reserve, BB

12 Economic Data, Economic Statistics, Wage Earners' Remittance Inflow, BB

13 Publication, FDI, BB

## MEMBER OF THE DELEGATION



**ASHRAF AHMED**  
President, DCCI

**Chief Executive Officer**  
**Riverstone Capital Limited**

Corporate Address:  
House # 10, Road # 6, Block # C  
Banani, Dhaka-1213, Bangladesh.

Telephone: +88-02-9898190, 9898203

Mobile: +88-01713001228

Email: president@dhakachamber.com  
md@riverstone.com.bd

Web: www.dhakachamber.com  
www.riverstone.com.bd

**Line of Business:**

Merchant Banking, Merger & Acquisition  
Investment Advisory Project, Finance Advisory

**Area of Collaboration:**

*Export: Merger & Acquisition  
Investment Advisory, Project Finance Advisory*

## MEMBER OF THE DELEGATION



### MALIK TALHA ISMAIL BARI

Senior Vice President, DCCI

Director

United Hospital Ltd.

Corporate Address:

Plot # 15, Road # 71, Gulshan  
Dhaka-1212, Bangladesh.

Telephone: +88-02- 9666700900

Mobile: +88-01914001122

Email: [svp@dhakachamber.com](mailto:svp@dhakachamber.com)  
[malik.bari@outlook.com](mailto:malik.bari@outlook.com)

Web: [www.uhlbd.com](http://www.uhlbd.com)

**Line of Business:**

Power Generation, Real Estate, Retail and Services  
Medical Services and Education

**Area of Collaboration:**

Export, Import & Joint Venture: *Healthcare, IT*  
*Agro Industries, Automobiles*

## MEMBER OF THE DELEGATION



### MD. JUNAED IBNA ALI

Vice President, DCCI

**Managing Director**

**Ali's Group**

*Associated/Subsidiary Companies:*

**J.N. Corporation**

**Trade Land International**

**Hi Tech Steel & Plastic Industries Pvt. Ltd.**

**Zara Agro**

**J.N. Ware House & Cutting Center**

**Zaber Agro & Dairy Farm, Zaber Steel**

**Zara Home Appliances & Electronics Ltd.**

**Zara Real Estate Ltd., Zara Lifestyle**

**Grand Autos**

#### **Corporate Address:**

Haji Md Ali Center, 27 Imamgonj (2<sup>nd</sup> Floor)

Dhaka-1211, Bangladesh.

Mobile: +88-01711531166

E-mail: junaed.tli@gmail.com

vp@dhakachamber.com

#### **Line of Business:**

Flat Rolled Steel Products (STEEL, HR, CR, EG, GA Coils)

Spices, Chemicals, Agro, Home Appliances

#### **Area of Collaboration:**

Export, Import & Joint Venture: *Steel, Spices*

*Chemicals also new products*

## MEMBER OF THE DELEGATION



**MD. SALEM SULAIMAN**

Director, DCCI

**Managing Director**

**Massons Polymer Corporation**

*Associated/Subsidiary Companies:*

**Lalbagh Metal Industries Ltd.**

**Champion & Massons Ltd.**

**Ssamsons Corporation**

**Corporate Address:**

Massons Building (Level#2)

2/A Abul Hasnat Road, Dhaka-1100, Bangladesh.

Tel: +88-02-57318797

Mobile: +88-01819227305

E-mail: [massons@dhaka.net](mailto:massons@dhaka.net)

Website: [massongroupbd.com](http://massongroupbd.com)

**Line of Business:**

Polymers, PVC Resin, EVA, GPPS HIPS, Pet Chips, Stearic Acid  
Tapioca Starch, Raw Rubber, SBR, BR, Food Products  
Petrochemicals Industrial Chemicals

**Area of Collaboration:**

Import: *Polymers, PVC Resin, Rubber Chemicals Tapioca Starch, Stearic Acid*  
Joint Venture: *Plastic Goods*

## MEMBER OF THE DELEGATION



### MOHAMMAD SAIFUR RAHMAN SAIF

Director, DCCI

Director

**Fair and Appropriate Technology Ltd.**

*Associated/Subsidiary Companies:*

**Sword Tex Ltd.**

**Telematics Solutions Ltd.**

**Shayan Resort**

**Corporate Address:**

House-03, Flat-A-2 (2<sup>nd</sup> Floor), Road-20  
Gulshan-1, Dhaka-1212, Bangladesh.

Telephone: +88- 02-222264074

Mobile: +88-01708427001

E-mail: saifrahman@fatbd.com

**Line of Business:**

Telecommunications, Construction, Hospitality & Tourism  
Import and Supply

**Area of Collaboration:**

Import: *Leather goods, Textile, Tourism*

Joint Venture: *Construction Materials, Footwear, Tourism, Healthcare  
Agriculture and Agro Industry*

## MEMBER OF THE DELEGATION



**MD. SIAAM AL-DDIN MALIK**

Director, DCCI

Proprietor

**Siaam Enterprise**

**Corporate Address:**

2 Kamal Daha Road, Posta, Chawk Bazar  
Dhaka-1211, Bangladesh.

Mobile: +88-01777455881

E-mail: siaam\_6600@hotmail.com

**Line of Business:**

Plastic Raw Materials: PP, HDP, LDP, LLD, PVC compound  
RMG: Polo Shirts, Shirts, Trousers, Kurtas

**Area of Collaboration:**

Export: *Ready Made Garments*  
Import: *Furniture, Construction Materials, Plastics Products etc.*  
Joint Venture: *RMG, Furniture*  
*Construction Materials Plastic Products etc.*

## MEMBER OF THE DELEGATION



**NAYEEMUR RAHMAN**

Director, DCCI

Director (Business Planning)

**Uttara Motors Limited**

(An enterprise of Uttara Group of Companies)

Corporate Address:

Uttara Centre

102 Shahid Tajuddin Ahmed Sarani

Tejgaon Industrial Area, Dhaka-1208, Bangladesh.

Tel: +88-02-41025166, 41025162

Mobile: +88-01730011700

E-mail: nmr@ugc-bd.net

**Line of Business:**

2 Wheeler Motorcycle, 3 Wheeler CNG

4 Wheeler Passenger Car Commercial Vehicle

**Area of Collaboration:**

Joint Venture: *Automobile Parts and Component Manufacturing*

## MEMBER OF THE DELEGATION



### RAZEEV H CHOWDHURY

Director, DCCI

Managing Director

Defense Dynamics Enterprise

Arco Cold Storage Ltd.

*Associated/Subsidiary Companies:*

MICROSEC International Ltd.

Watches World Ltd.

Corporate Address:

Apt-1B, House-30, Road-111  
Gulshan-2, Dhaka -1212, Bangladesh.

Tel: +88-02-29885771

Mobile: +88-01724802209

E-mail: razeevc@ddebd.com

Web: [www.ddebd.com](http://www.ddebd.com), [www.microsec.co.uk](http://www.microsec.co.uk)  
[www.watchesworldbd.com](http://www.watchesworldbd.com)

**Line of Business:**

Equipments & Parts for Oil, Gas and Defense Industry

**Area of Collaboration:**

Import: *Casing and Tubing, Drill Pipe, Line Pipe, Mud & Completion  
Chemicals, Drilling Rig components, Gas Processed Equipments  
any other Oil and Gas Related Equipments and Spare Parts*

Joint Venture: *Agriculture and Food Industries*

## MEMBER OF THE DELEGATION



**SAIF UDDOWLAH**

Director, DCCI

**Managing Director**

**Petrochem (Bangladesh) Limited**

*Associated/Subsidiary Companies:*

**Petrochem Agro Industries Ltd.**

**Bangla Solat IT**

**Habitat Builders Ltd.**

**Solar Power Limited**

**Growvita Agro Limited**

**International Services Limited**

**Corporate Address:**

ABC Heritage (3<sup>rd</sup> Floor), Plot #2 & 4, Jashim Uddin Avenue  
Sector #3, Uttara, Dhaka-1230, Bangladesh.

Telephone: +88-02-48961701-3

Mobile: +88-01713244941

E-mail: saifuddowla@petrochembd.com

**Line of Business:**

Agriculture, Machinery, Renewable Energy, LED Lights  
IT & Outsourcing

**Area of Collaboration:**

Export: *Fruits, Vegetables, Spices, Machineries*

Import: *Agro Products*

Joint Venture: *Agro Processing Factory Set up/Machineries*

## MEMBER OF THE DELEGATION



**EAZAZ MOHAMMED**

Managing Director

**Orchard Marketing Company Ltd.**

*Associated/Subsidiary Companies:*

**Royal Aviation Services Ltd.**

**Royal Industrial Park Ltd.**

**Orchard Developers & Construction Ltd.**

**Indigo Corporation Global Ltd.**

**Global Islami Bank Ltd.**

Corporate Address:

Orchard Faruque Tower (Level-17), 72 Nayapaltan  
Paltan, Dhaka-1000, Bangladesh.

Telephone: +88-02-48318901-02

Mobile: +88-01811443426

E-mail: eazaz.orchard@gmail.com

info@orchardbd.com

**Line of Business:**

Ticketing & Tourism Construction, Machine & Materials,  
Ceramic Tiles & Sanitary Ware, Commodities

**Area of Collaboration:**

Export: *RMG, Ceramic Tiles*

Import: *Aviation, Ceramic Raw Materials*

Joint Venture: *Construction, Aviation*

## MEMBER OF THE DELEGATION



**MINHAJ AHMED**

Managing Director

**Ahmed Food Products (Pvt.) Ltd.**

Corporate Address:

M/4/4, Road #7, Section #7  
Mirpur, Dhaka-1216, Bangladesh.

Telephone: +88-01987877877

Mobile: +88-01937444222

E-mail: ahmedfd@dhaka.net

**Line of Business:**

Jam, Jellies, Sauces, Pickles, Snacks, Spices, Bakery etc.

**Area of Collaboration:**

Export, Import & Joint Venture: *FMCG*

## MEMBER OF THE DELEGATION



**RASHAD KABIR**

Managing Director

**Dream71 Bangladesh Ltd.**

Corporate Address:

Hyatt Rose Park (Level-05), House#16, Block#A  
Bashundhara Main Road, Bashundhara R/A  
Dhaka-1229, Bangladesh.

Telephone: +88-02-09678711971

Mobile: +88-01715091734

E-mail: rashad@dream71.com

**Line of Business:**

Software

**Area of Collaboration:**

Export: *Software Development, Mobile Apps Development  
Artificial Technology, Sales & HR Software*  
Joint Venture: *Software Outsourcing Partner*

## MEMBER OF THE DELEGATION



### RASHEED MYMUNUL ISLAM

Managing Director

Monno Group of Industries

*Associated/Subsidiary Companies:*

Monno Ceramic Industries Limited

Monno Fabrics Ltd.

Monno Agro & General Machinery Ltd.

Monno Medical College & Hospital

MARS Retail Ltd.

Corporate Address:

9 Wyer Street, Wari, Dhaka-1203, Bangladesh

Telephone: +88-02-223382185

Mobile: +88-01711425244

E-mail: rasheed.islam@monno.com

**Line of Business:**

Ceramic Tableware, Textiles Industrial Machines and Spares

**Area of Collaboration:**

Export: *Ceramic Tableware*

Import: *Raw Materials, Homewares*

Joint Venture: *Agro-processing, Light Engineering*

## MEMBER OF THE DELEGATION



**MOHAMMAD NAVEED AHMED**

Managing Director

**Miyako Appliance Limited**

*Associated/Subsidiary Companies:*

**Kinbo Manufacturing Industries Limited**

**Corporate Address:**

Nagarik Tower (Level-15), Plot #50

Sector #03, Uttara

Dhaka-1230, Bangladesh.

Telephone: +88-01847076855

Mobile: +88-01711645629

E-mail: naveed@miyakomarketing.com

**Line of Business:**

Electronic Home Appliance

**Area of Collaboration:**

Import: *Electronic Home Appliance, Gas Cooker*

Joint Venture & Investment: *Electronic Home Appliance*

*Air Conditioner, Cookware*

## MEMBER OF THE DELEGATION



**MD. REZAUL HAKIM**

Chairman & Managing Director  
**Plus Group**

*Associated/Subsidiary Companies:*

**Mountain Club Tours**  
**Aristo Corporation Ltd.**  
**Colorplus Masterbatch Mfg. Co. Ltd.**  
**Masterbatch Mfg. Co. Ltd.**  
**Multi Link Trading, Hardware Plus Ltd.**  
**Metaltech Plus Co. Ltd., Polymer Plus Ltd.**

Corporate Address:

Rangs Pearl (10<sup>th</sup> floor), Plot #76, Road #12/17  
Block #E, Banani, Dhaka-1213, Bangladesh.

Telephone: +88-02-8836182

Mobile: +88-01933777888

E-mail: shanto13@gmail.com

**Line of Business:**

Masterbatch, Tourism, Plastic Packaging, TPE & TPR  
Mold, Hardware, Trading.

**Area of Collaboration:**

Export: *Masterbatch, Plastic Packaging, TPE & TPR*

## MEMBER OF THE DELEGATION



**MIR SHAहरुKH ISLAM**  
Managing Director & CEO  
**Bondstein Technologies Limited**

*Associated/Subsidiary Companies:*

**Singularity Ltd.**  
**Kyro Solutions LLC**  
Sister Concern  
**Runner Automobiles Limited**  
**Runner Group**

**Corporate Address:**

Level-4, 138/1, Tejgaon I/A  
138 Bir Uttam Mir Shawkat Sarak  
Dhaka-1208, Bangladesh.

Telephone: +88-01847069230

Mobile: +88-01727654326

E-mail: shahrukh@bondstein.com

**Line of Business:**

AI Solutions, IOT Solutions, Vehicle Tracking  
Engineering Resource Outstaffing, Design Services, BPO

**Area of Collaboration:**

Export: *BPO, Outstaffing Engineering Resource, AI & IOT Solutions*

Import: *AI & IOT Technologies*

Joint Venture: *BPO*

## MEMBER OF THE DELEGATION



### MOHAMMAD MAHFUJ KHAN

Chairman & Managing Director

Dot5 Pvt. Ltd.

*Associated/Subsidiary Companies:*

Go Dot5  
Dot5 Studio

Corporate Address:

House: BA #117/2, Level #7  
Gulshan Lake Drive Road, Dhaka-1212, Bangladesh.

Telephone: +88-01615553685

Mobile: +88-01616161733

E-mail: mahfuj333@gmail.com

**Line of Business:**

Interior & Exterior, Travel Agency

**Area of Collaboration:**

Import & Joint Venture: *Interior Decoration, Furniture  
Tourism, Real Estate*

## MEMBER OF THE DELEGATION



**FARUQUE AHMED**

Managing Director

**Maxwell Homes & Properties Limited**

**Corporate Address:**

Rupayan Trade Center (level #16)  
114 Kazi Nazrul Islam Avenue  
Banglamotor, Dhaka-1000, Bangladesh.

Telephone: +88-01711050742

Mobile: +88-01678112332

E-mail: faruqueahmed742@gmail.com

**Line of Business:**

Maxwell Western city, Builders, Beef Fattening, Poultry  
Fish culture, Air Conditioners

**Area of Collaboration:**

Export: *Agro & Food Processing Items*

Import: *Light Engineering & Construction Items*

## MEMBER OF THE DELEGATION



**GAZI MOTIN HOSSAIN**

Owner

**Daphnia International**

**Corporate Address:**

C/13, Rowshon Mansion, South Badda  
Dhaka-1229, Bangladesh.

Mobile: +88-01780499936

E-mail: deepakgazi@gmail.com

**Line of Business:**

Mens Cargo Pant, Half Pant, Jogger, Trouser, Kids Pant

**Area of Collaboration:**

Export: *RMG Products*

## MEMBER OF THE DELEGATION



**KANIJ FATIMA**

Proprietor

**TripZip.Tours**

**Corporate Address:**

House #06, Road #109, Gulshan-02  
Dhaka-1212, Bangladesh.

Telephone: +88-02-55069732

Mobile: +88-01711595561

E-mail: kanijtripzip@gmail.com

**Line of Business:**

Destination Management  
Visa, Air Ticket, Tour packages, MICE etc.

**Area of Collaboration:**

Export & Import: *Tourism*

## MEMBER OF THE DELEGATION



**MD ABDUL AWAL**

Proprietor

**SI Garments**

**Corporate Address:**

32 Laskarpara, Sataish  
Tongi, Gazipur-1712, Bangladesh.

Telephone: +88-01723941316

Mobile: +88-01723941316

E-mail: mdabdulawal260@gmail.com

**Line of Business:**

Knit Garments product items

**Area of Collaboration:**

Export: *All kinds of Knit Garments*

Import: *Fabrics & Yarn*

## MEMBER OF THE DELEGATION



**MD. ARSAD PARVEZ**  
Managing Director  
**DG Bangla Engineering Ltd.**

**Corporate Address:**

House #456, Road #06, Avenue #06  
Mirpur DOHS, Dhaka-1216, Bangladesh.

Telephone: +88-02-44806615

Mobile: +88-01752500034

E-mail: [arsad01341@gmail.com](mailto:arsad01341@gmail.com)

**Line of Business:**

Civil and Electromechanical work, Dredging

**Area of Collaboration:**

Import: *Generators, Fire Protection System, Fire Detection System*

Joint Venture & Investment: *Construction*

*(Road, Infrastructure, Building)*

## MEMBER OF THE DELEGATION



**MD. JALAL UDDIN**

Chairman

**SSG Global Limited**  
**(Super Star Group Ltd.)**

### Corporate Address:

SSG Center, Nabosrista Plot #1/A  
Tejgaon I/A, Dhaka-1208, Bangladesh.

Telephone: +88-02-226603292-93

Mobile: +88-01729260002

E-mail: jalal@ssgbd.com

### Line of Business

Manufacturer of Electrical Switches, Sockets, Ceiling Accessories, Ceiling Fans, Table Fans, Pedestal Fans, Wall Fans, Stormy Fans, Exhaust Fans, LED Lighting, Incandescent Lamps, PVC Tape, Testers, Cables, Energy Meters, Circuit Breakers, Tissue Paper Jumbo Rolls, etc.

### Area of Collaboration

Export: Electrical Switches, Sockets, Ceiling Accessories, Ceiling Fans, Table Fans, Pedestal Fans Wall Fans, Stormy Fans, Exhaust Fans, LED Lighting Incandescent Lamps, PVC Tape, Testers, Cables, Energy Meters, Circuit Breakers, Tissue Paper Jumbo Rolls, etc.

## MEMBER OF THE DELEGATION



**MD. MOSTAFIZUR RAHMAN**  
Managing Director  
**Novatek Pharmaceuticals Ltd.**

**Corporate Address:**

House #3A, Road #15 (New) 28 (Old)  
Dhanmondi, Dhaka-1209, Bangladesh.

Mobile: +88-01713006627, 01711427977

E-mail: [mostafiz@novatekbd.com](mailto:mostafiz@novatekbd.com)

**Line of Business:**

Pharmaceuticals

**Area of Collaboration:**

Export & Joint Venture: *Pharmaceuticals Products*

## MEMBER OF THE DELEGATION



**MD. SHAH ALAM**

Proprietor

**Alam & Associates**

**Corporate Address:**

Modern Mansion, 53 Motijheel C/A  
Dhaka-1000, Bangladesh.

Telephone: +88-02-9515624

Mobile: +88-01715040887

E-mail: md.shahalam62@yahoo.com

**Line of Business:**

Lubricating Oil & Grease, Chemicals & Automobile

**Area of Collaboration:**

Import & Joint Venture: *Lubricating Oils & Grease  
Chemicals, Automobile*

## MEMBER OF THE DELEGATION



**MD. ABRARUL ALAM**  
Managing Director  
**EXG Project Logistics (BD) Ltd.**

*Associated/Subsidiary Companies:*

**EUR Service (BD) Ltd.**  
**EUR Logistics Services Ltd.**  
**Crystal Express Ltd.**

**Corporate Address:**

Rangs Paramount 2 (6<sup>th</sup> Floor)  
House #11, Road #17, Banani C/A  
Dhaka-1213, Bangladesh.

Telephone: +88-02-222274115-19

Mobile: +88-01713042493

E-mail: md@eurservicebd.com

**Line of Business:**

Project Transportation & Handling, Project Forwarding  
Freight Forwarding, Multimodal Transportation  
Warehousing Facilities, Equipment Supports etc.

**Area of Collaboration:**

Export & Import: *Logistics Business*

## MEMBER OF THE DELEGATION



### MOHAMMED TAHER UDDIN

Chief Executive Officer

TRS Label & Packaging

#### Corporate Address:

148/3, Shah Ali Bag, Mirpur-1  
Dhaka-1216, Bangladesh.

Mobile: +88-01919749071, +971507054312

E-mail: tahertrs77@gmail.com

#### Line of Business:

RMG sector Backward Linkage, Agro Foods &  
Building Materials Trading

#### Area of Collaboration:

Export: *All kinds of Garments Accessories (Poly, Label, Sticker, etc.)*

Import & Joint Venture: *LDPE/LLDPE/PP/Adhesive*

## MEMBER OF THE DELEGATION



### MOHAMMAD JAHANGIR HOSSAIN

General Manager (International Business)

**SSG Global Limited**  
(Super Star Group Ltd.)

#### Corporate Address:

SSG Center, Nabosrista Plot #1/A  
Tejgaon I/A, Dhaka-1208, Bangladesh.

Tel: +88-02-226603292-93

Mobile: +88-01713195727

E-mail: jahangir@ssgbd.com

#### Line of Business:

Manufacturer of Electrical Switches, Sockets, Ceiling Accessories  
Ceiling Fans, Table Fans, Pedestal Fans, Wall Fans, Stormy Fans  
Exhaust Fans, LED Lighting, Incandescent Lamps, PVC Tape, Testers  
Cables, Energy Meters, Circuit Breakers, Tissue Paper, Jumbo Rolls etc.

#### Area of Collaboration:

Export: *Electrical Switches, Sockets, Ceiling Accessories, Ceiling Fans, Table Fans, Pedestal Fans, Wall Fans, Stormy Fans, Exhaust Fans, LED Lighting, Incandescent Lamps, PVC Tape, Testers, Cables Energy Meters, Circuit Breakers, Tissue Paper, Jumbo Rolls etc.*

## MEMBER OF THE DELEGATION



**NURUDDIN AHAMMED**

Managing Director

**Maroon Clothing Limited**

*Associated/Subsidiary Companies:*

**Ariyan Trading  
Artek Label Limited  
Swatej Agro**

Corporate Address:

House #443/2, Block #C, Khilgaon  
Dhaka-1219, Bangladesh.

Mobile: +88-01819740534, 01767080017

E-mail: n.babu.2005@gmail.com

**Line of Business:**

Knit Products: T shirts, Polo Shirts, Trousers  
Vegetables and Fisheries etc.

**Area of Collaboration:**

Export: *RMG and Agro Products*  
Import: *Electronics & Accessories Items*

## MEMBER OF THE DELEGATION



**RAGHUPATI SEN**

Managing Director & CEO

**Balaji Industries Ltd.**

*Associated/Subsidiary Companies:*

**M/s A R Trading**

Corporate Address:

48/1-A Purana Paltan (5<sup>th</sup> floor)

Dhaka-1000, Bangladesh.

Tel: +88-02-09514238

Mobile: +88-01817030546

E-mail: rpsen1972@gmail.com

**Line of Business:**

Manufacturers & Importers of Paper, Dyeing, Paint & Woven processing chemicals and Fiber

**Area of Collaboration:**

Import: *Calcium, Resin, Fiber*

Export & Joint Venture: *Corn, Plastic, Water, Fish*

## MEMBER OF THE DELEGATION



**SAJED UL ISLAM**

Adviser, Vietnam

**Riverstone Capital Limited**

Corporate Address:

House #10, Road #06, Block #C  
Banani, Dhaka-1213, Bangladesh.

Mobile: +88-01819257690

Tel: +84942855390

Email: [sajedislam71@yahoo.com](mailto:sajedislam71@yahoo.com)

[sajed@avenirvietnam.com](mailto:sajed@avenirvietnam.com)

[www.riverstone.com.bd](http://www.riverstone.com.bd)

**Line of Business:**

Merchant Banking, Merger  
& Acquisition, Investment Advisory, Project  
Finance Advisory

**Area of Collaboration:**

Export: *Merger & Acquisition, Investment Advisory Project  
Finance Advisory*

## MEMBER OF THE DELEGATION



### SHAIKH EHSANUL HABIB

Managing Director

Green Power Ltd.

#### Corporate Address:

2/4 UAE Moitry Complex (1<sup>st</sup> floor)  
4F/1 Kemal Ataturk Avenue  
Banani, Dhaka-1213, Bangladesh.

Tel: +88-02-222274885, 222274959

Mobile: +88-01711537474

E-mail: ehsan@greenpowerbd.com

#### Line of Business:

Power Sector, Solar System Generator, Digital Security Device

#### Area of Collaboration:

Import: *Lift, Power Equipment, Renewable  
Energy, Generator*

Joint Venture: *Power Equipment, Renewable Energy*

## MEMBER OF THE DELEGATION



**SHAK NEIAMUL KARIM RASEL**  
Managing Director  
**Bangladesh Elevator Limited**

**Corporate Address:**

Camelia House-21, Flat-1/A  
Ishakha Avenue Road, Sector-06  
Uttara Model Town  
Dhaka-1230, Bangladesh.

Tel: +88-02-48961189

Mobile: +88-01711664900

E-mail: [bangladeshelevator2010@gmail.com](mailto:bangladeshelevator2010@gmail.com)

**Line of Business:**

Lift, Escalator, Generator, Substation

**Area of Collaboration:**

Import: *Lift, Electronic Machinerics*

## MEMBER OF THE DELEGATION



**SK SHAHIDULLAH**

Managing Director

**Al-Arafah Power Engineering Ltd.**

Corporate Address:

85/1-A, Purana Paltan Line  
Paltan, Dhaka-1000, Bangladesh.

Tel: +88-02-226664925

Mobile: +88-01941732390

E-mail: alarafahpel@gmail.com

**Line of Business:**

RMG, Textile Fabrics, Textile Machineries

**Area of Collaboration:**

Import: *Light Engineering*

## MEMBER OF THE DELEGATION



### TANJIL AHMED RUHULAH

Managing Director  
Interport Group

*Associated/Subsidiary Companies:*

Interport Ship Agents Ltd.

Interport Maritime Ltd.

Bangla Network and Communication Service Provider Ltd.

Interasia Survey and Inspection

Interport Corporate Academy

The Sail Shipping Ltd.

Corporate Address:

MHK Terminal (5<sup>th</sup> Floor), 110 Kazi Nazrul Islam Avenue  
Bangla Motor, Dhaka-1000, Bangladesh.

Telephone: +88-02-222226835

Mobile: +88-01701350957

E-mail: [tanjil@interport.org](mailto:tanjil@interport.org)

**Line of Business:**

Port Agency, Liner Shipping Agency, Freight Forwarding, Contract Logistics, Marine Claims Handling, Chemical and General Trading, Marine Survey & Inspection

**Area of Collaboration:**

Export, Import & Joint Venture: *Logistics*

## DELEGATION COORDINATORS



### AFSARUL ARIFEEN

Secretary General

**Dhaka Chamber of Commerce & Industry (DCCI)**

Dhaka Chamber Building (4<sup>th</sup> floor)

65-66 Motijheel C/A, Dhaka-1000, Bangladesh.

Tel: +88-02-47122988

Cell: +88-01715155485 (Whatsapp)

E-mail: secretary.general@dhakachamber.com

---



### AHM MANIRUZZAMAN

Additional Executive Secretary

(Trade Facilitation & International Affairs Department)

**Dhaka Chamber of Commerce & Industry (DCCI)**

Dhaka Chamber Building (4<sup>th</sup> floor)

65-66 Motijheel C/A, Dhaka-1000, Bangladesh.

Tel : +88-02-47122988

Cell : +88-01826622405 (Whatsapp)

E-mail : maniruzzaman@dhakachamber.com

## DELEGATION COORDINATORS



### MD. AKRAMUL HAQUE

Additional Executive Secretary  
(PR & Event Department)

#### Dhaka Chamber of Commerce & Industry (DCCI)

Dhaka Chamber Building (4<sup>th</sup> floor)  
65-66 Motijheel C/A, Dhaka-1000, Bangladesh.  
Tel : +88-02-47122988  
Cell : +88-01911717049 (Whatsapp)  
E-mail : akram@dhakachamber.com

---



### RASEL AHAMED

Joint Executive Secretary  
(Administration, Membership, HRM &  
Common Service Department)

#### Dhaka Chamber of Commerce & Industry (DCCI)

Dhaka Chamber Building (4<sup>th</sup> floor)  
65-66 Motijheel C/A, Dhaka-1000, Bangladesh.  
Tel : +88-02-47122988  
Cell: +88-1937893460 (Whatsapp)  
E-mail : raselahamed@dhakachamber.com

*Note:*

A large rectangular area with a blue border, containing 20 horizontal dashed lines for writing. The lines are evenly spaced and extend across the width of the box.



## **DHAKA CHAMBER BUILDING**

### **DHAKA CHAMBER OF COMMERCE & INDUSTRY**

Dhaka Chamber Building (4<sup>th</sup> floor)

65-66 Motijheel Commercial Area, Dhaka-1000, Bangladesh.

Tel: +88-02-471-22-986 (Hunting), Fax: +88-02-223380830

Email: [info@dhakachamber.com](mailto:info@dhakachamber.com), Website: [www.dhakachamber.com](http://www.dhakachamber.com)